

Product Features

- Special negative active material additives improved battery high and low temperature performance and charge acceptance ability;
- Special 4BS additives and high temperature curing process make battery have long cycle life;
- Compact assembly technology, effectively prevent the active material softening and shedding;
- Patent waterproof terminal structure design, suitable for underground use.

Application

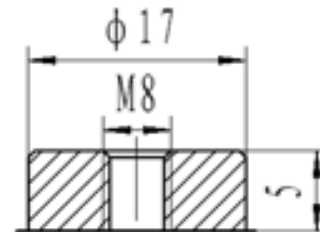
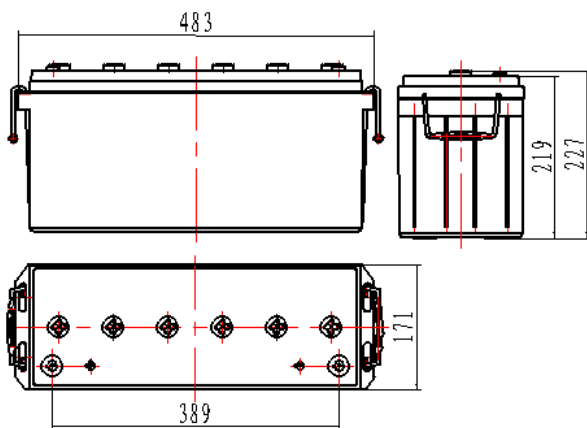
- Power supply system for solar energy and wind energy;
- Solar energy/wind energy street lamp, signal lamp;
- Frontier sentry Island garrison power supply system
- Remote monitoring system, and base station

Compliant Standards

- GB/T 19639.1-2005;
- GB/T 22473-2008
- IEC 61427-2005
- Passed ISO9001、ISO14001、OHSAS18001 certificates
- Eurobat guide;

Safety

- installation compliant with:EN50272-2


SP-30

Battery Model	SPU12-150			
Designed Life	10 Years			
Capacity(25°C)	20HR(7.65A,1.80V)	10HR(15.0A,1.80V)	5HR(23.61A,1.80V)	3HR(35.4A,1.80V)
	153AH	150AH	118.05AH	106.2AH
Dimensions	Length	Width	Height	Total Height
	483mm	171mm	219mm	227mm
Approx. Weight	42.5kg			
Internal Resistance	3.2m Ω			
Short Circuit Current	3500A			
Self Discharge	≤2% per months (25°C)			
Charge Voltage(25°C)	Cycle use (≤20%DOD)		Cycle use (>20%DOD)	
	14.2V(-24mV/°C), max charge current:37.5A		14.6V(-24mV/°C)	

Discharge parameter:

Constant current discharge data (25°C, A)								
End voltage (V/cell)	3h	5h	10h	20h	50h	100h	120h	240h
1.70	37.50	24.27	15.40	7.805	3.139	1.672	1.457	0.773
1.75	36.60	24.00	15.23	7.774	3.130	1.660	1.447	0.769
1.80	35.40	23.61	15.00	7.650	3.090	1.650	1.438	0.763
1.85	33.90	22.71	14.40	7.401	3.008	1.605	1.401	0.746
1.90	31.50	21.12	13.41	6.873	2.800	1.513	1.325	0.702
1.95	27.30	17.97	11.39	5.846	2.382	1.283	1.126	0.601

Constant power discharge data (25°C, W)								
End voltage (V/cell)	3h	5h	10h	20h	50h	100h	120h	240h
1.70	69.00	46.35	29.74	15.37	6.248	3.329	2.906	1.567
1.75	68.10	45.96	29.58	15.34	6.236	3.319	2.902	1.567
1.80	66.60	45.45	29.25	15.19	6.190	3.319	2.899	1.563
1.85	64.50	43.92	28.17	14.73	6.039	3.237	2.826	1.529
1.90	60.90	41.07	26.27	13.71	5.626	3.052	2.678	1.441
1.95	53.70	35.40	22.36	11.69	4.794	2.595	2.280	1.236

Performance Curve:
